

CANNABIS PASSPORT

Passport No. CA123456



Botanical Name:
CANNABIS SATIVA

Date Issued:
2022-08-08

Cultivar:
'MAPLE GLAZE'

Breeder:
HERBACORP

Issued to:
CLIENT NAME
321 PLANT LANE, MEADOW CREEK, NB, CANADA
E3B 0W0



VARIETY DESCRIPTION

'Maple Glaze' is a very early maturing, dioecious Cannabis sativa hybrid variety. The medium green cotyledons are ovate-oblong in shape with no anthocyanin colouration. The dioecious plants are predominately female with strong sex expression. Flowers typically appear between the third and fifth node. Branching of the plants is moderate. The dark green stem is medium in thickness with medium evidence of grooves. Internode length is medium. The medium purple leaves are medium in size with five to seven leaflets. There is moderate anthocyanin colouration of the leaves or petioles. The seeds of 'Maple Glaze' are small in size and ovate-oblong in shape.



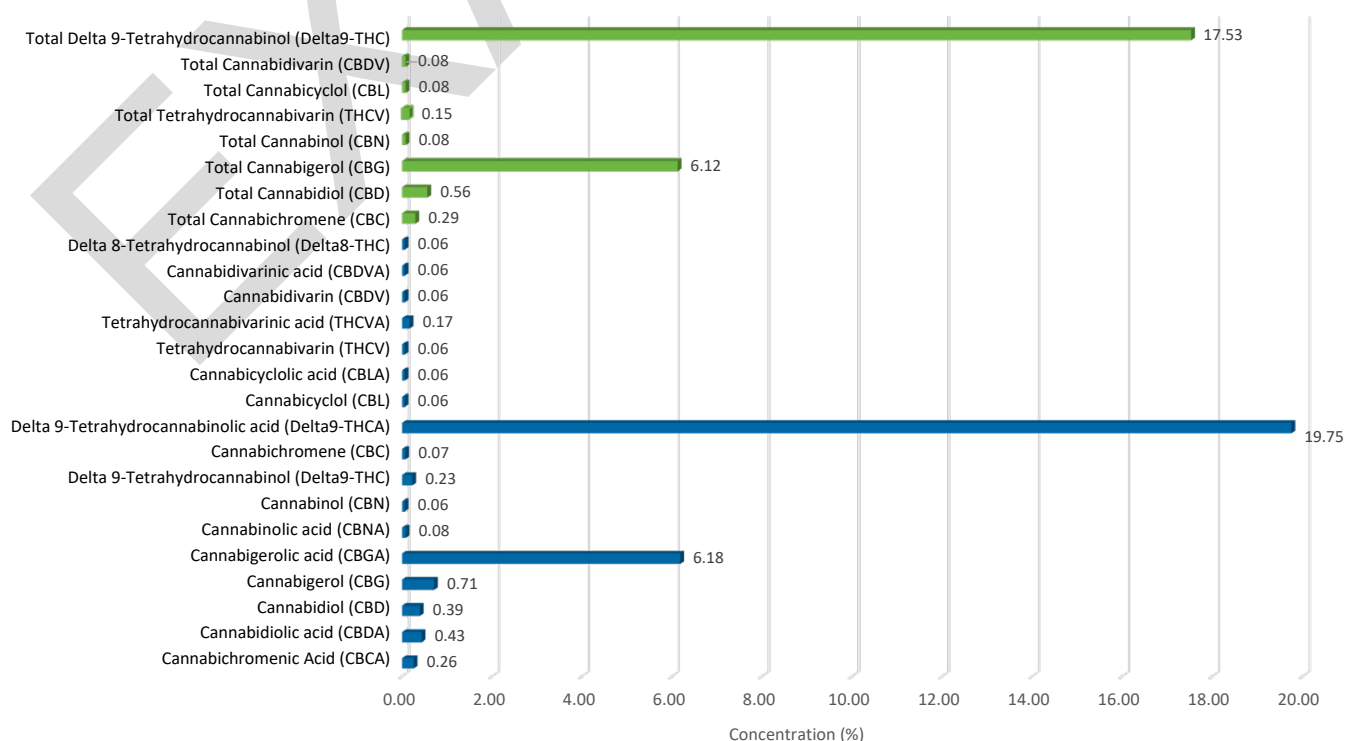
ORIGIN & BREEDING HISTORY

'Maple Glaze' resulted from a mechanical blend of two similar early-blooming varieties, MG-12 and MG-27. The blend was planted and grown indoors in May 2019. Plants were manually harvested in late August. The resulting hybrid was reproduced by tissue culture of female plants.



CANNABINOID PROFILE

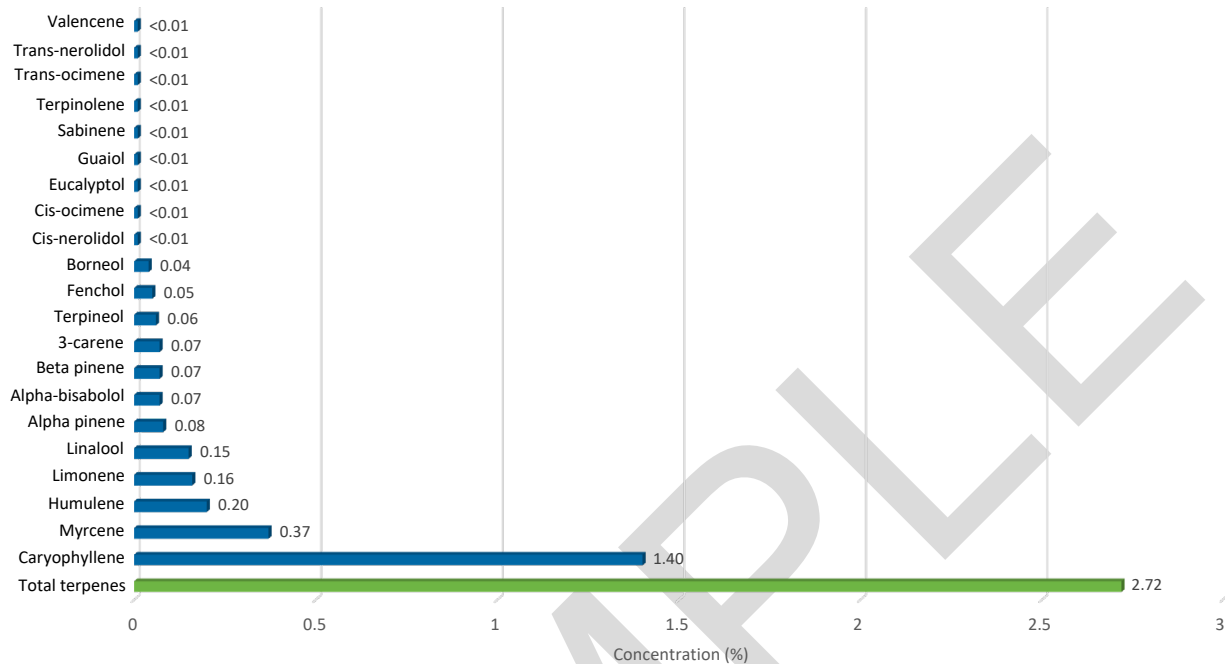
For more information see CoA 123456-OAS





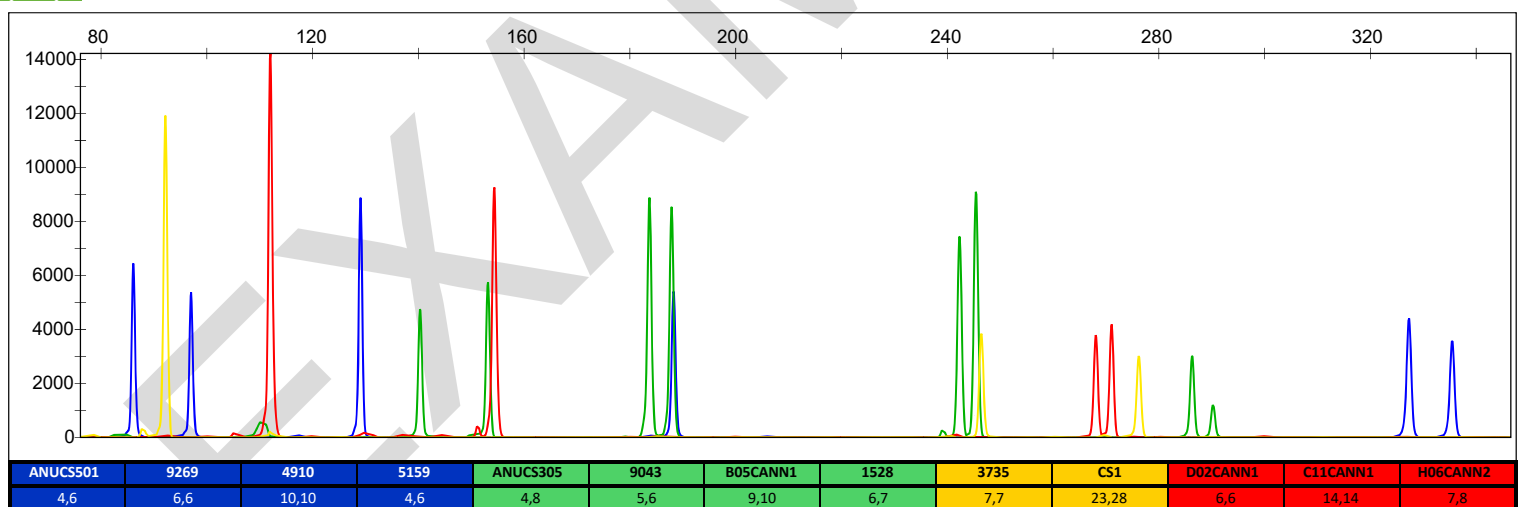
TERPENE PROFILE

For more information see CoA 123456-OAS



GENETIC PROFILE

For more information see CoA 123456-AEB



Random Match Probability*

1 in 136,949,000

*Based on database comparison performed on August 8, 2022

rpc

SCIENCE & ENGINEERING
921 College Hill Rd
Fredericton NB
Canada E3B 6Z9
506-452-1212

Prepared by:

Barbora Balonova

Dr. Barbora Balonova
Research Scientist

Authorized by:

Dr. Andrien Rackov
Supervisor of Research Services

ISO 9001 CERTIFIED

This testing laboratory is accredited by the Standards Council of Canada for specific tests as listed on www.scc.ca

ISO 9001
Quality